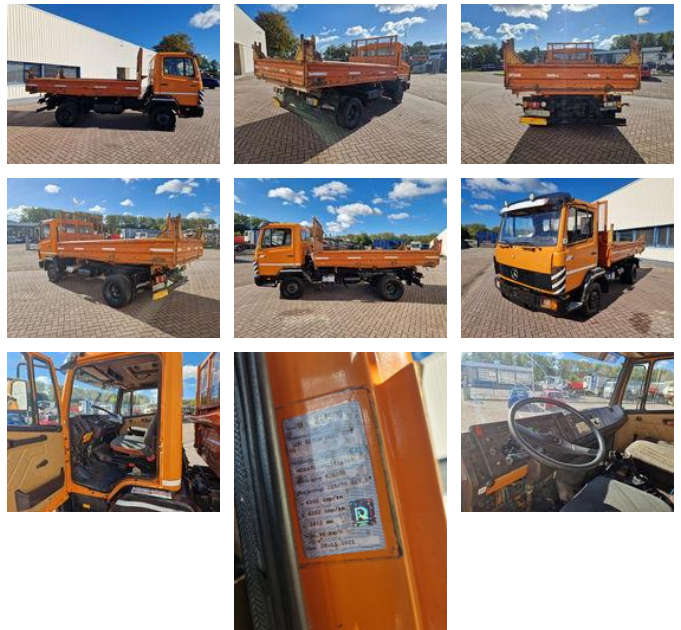


Mercedes-Benz Tipper / Full Steel

General features

Brand	Mercedes-Benz
Subcategory	Tipper
Odometer reading	1.001.773km
Construction year	1991
Date of first registration	02-04-1991
Color	orange
Condition	Used
General condition	Good
Fuel	Diesel
Emission class	Euro 1
Reference	M-238



Characteristics

Cabin	crew_cab
Serial number	WDB67604015594743

Mercedes-Benz Tipper / Full Steel

Technical specifications

Number of axes	2
Axis configuration	4x2
Transmission	Manual
assets	170hp

Accessories

- Leaf spring suspension
- Air horn
- Visor